



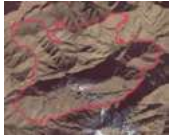
42km  
2600<sub>mD+</sub>



# ROADBOOK

## MARATHON DE L'ATLAS

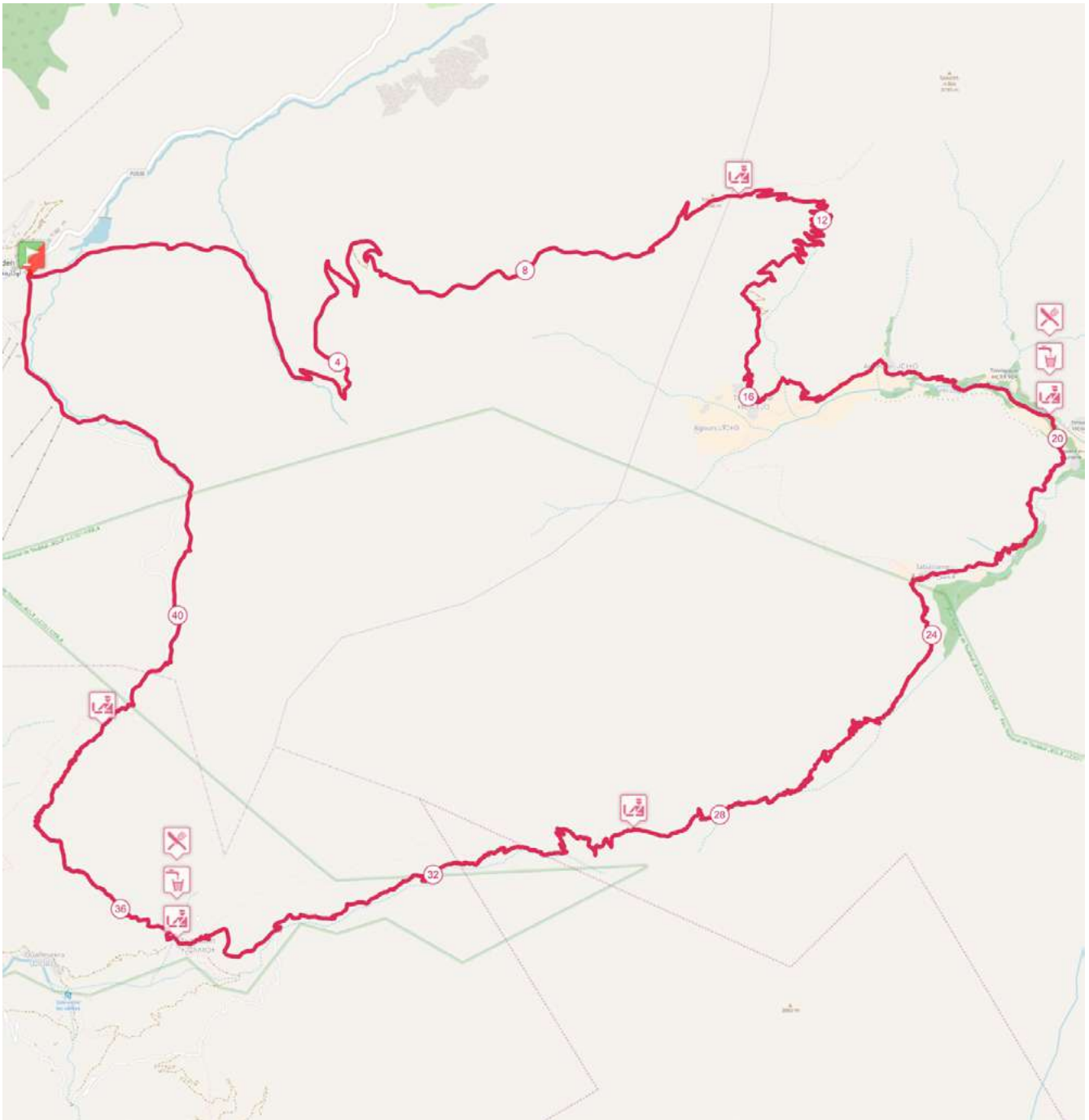
UTAT



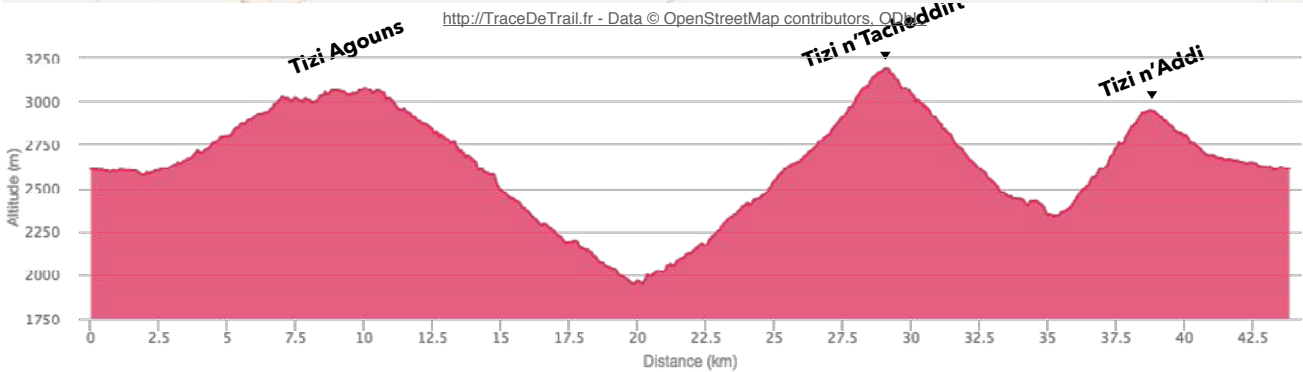
# Ultra Trail Atlas Toubkal 2018 - UTAT - Marathon de l'Atlas

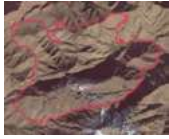


43.8 km, 2800 m+, 2800 m-



<http://TraceDeTrail.fr> - Data © OpenStreetMap contributors, ODN

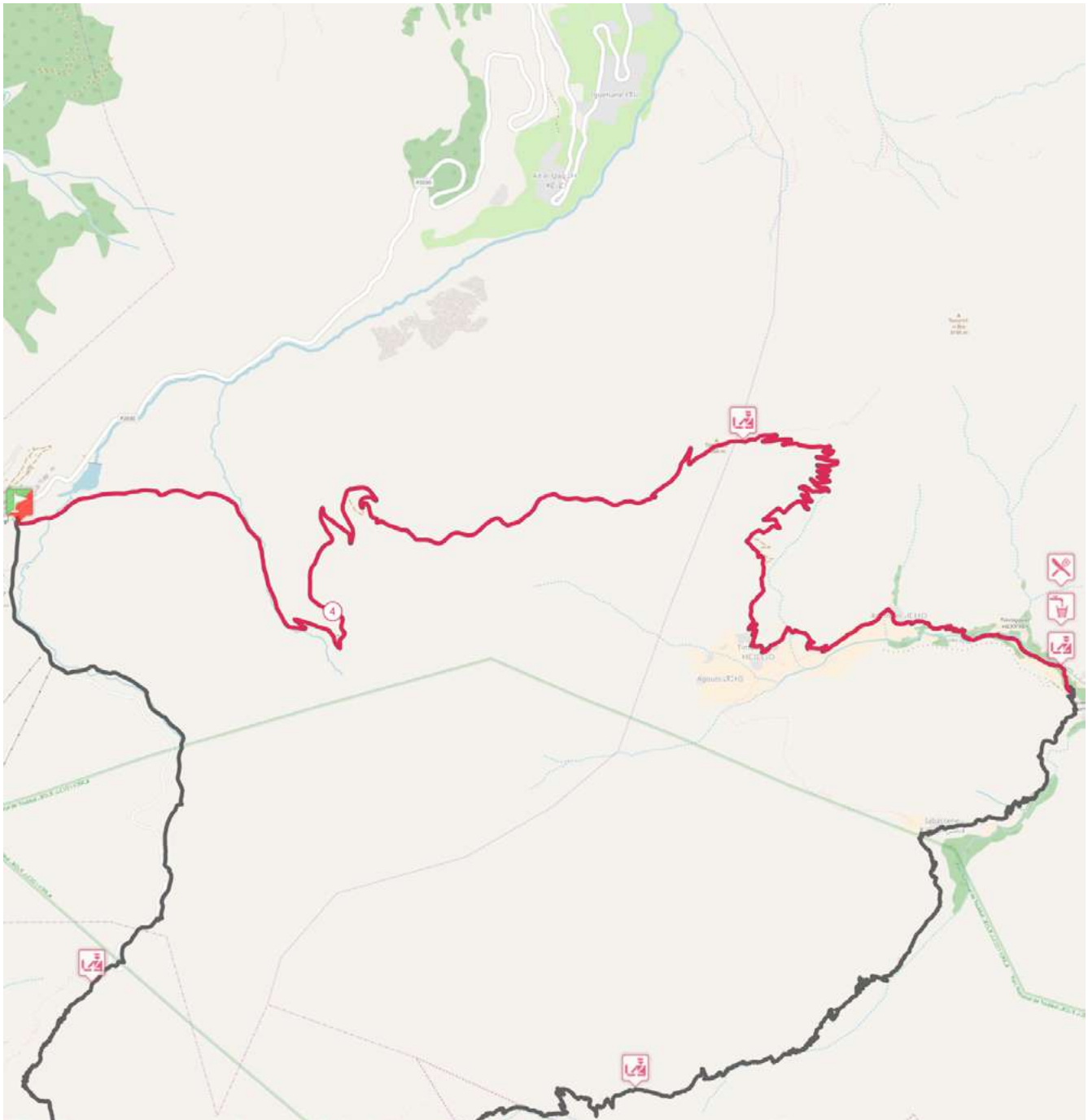




## Ultra Trail Atlas Toubkal 2018 - UTAT - Marathon de l'Atlas



Du km 0 au km 20, 791 m+, 1436 m-



Tizi Agouns  
TraceDeTrail.fr - Data © OpenStreetMap contributors, ODbL



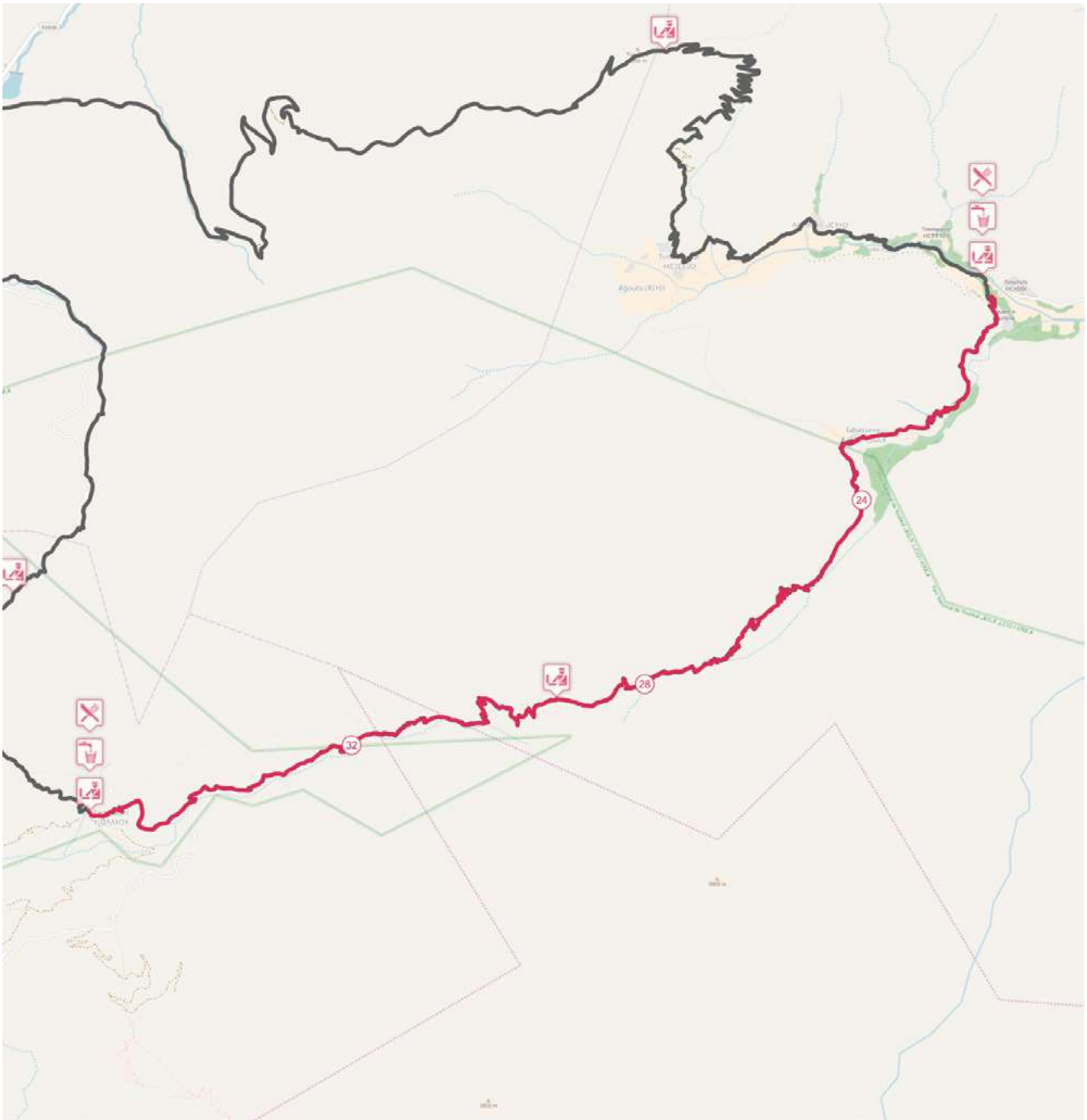
Departure is given from Oukaïmeden. After a few kilometers of a rising track (450 m D +), you reach a ridge from which dawn is a marvel. A descent takes you to a valley where the oued Ourika takes its source and announces the entry into Berber country. The first village, Agouns, is reached through a winding and hilly course, then draws the first PC in Timichi (20th km).



## Ultra Trail Atlas Toubkal 2018 - UTAT - Marathon de l'Atlas



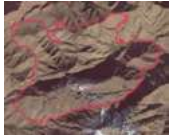
Du km 20 au km 35.1, 1360 m+, 979 m-



<http://www.trace-trail.fr> - Data © OpenStreetMap contributors, ODbL



A climb in laces, a bit steep for a few hundred meters, leads you to a shoulder from where you see a new valley. A wide and rolling path leads you to the village of Labassene. After circling the eastern ridge of the Adrar Tissi (3 1278 m), you start the positive 800 meters separating you from the Tizi n'Tacheddirt (3,230 m). The path passes from one bank to the other of a pretty river and, more than once, you will expect to see the end of your troubles up there? Yet the pass is still far away. After the ascent, you finally reach the Tizi n'Tacheddirt. 6 km below, Tacheddirt is emerging.



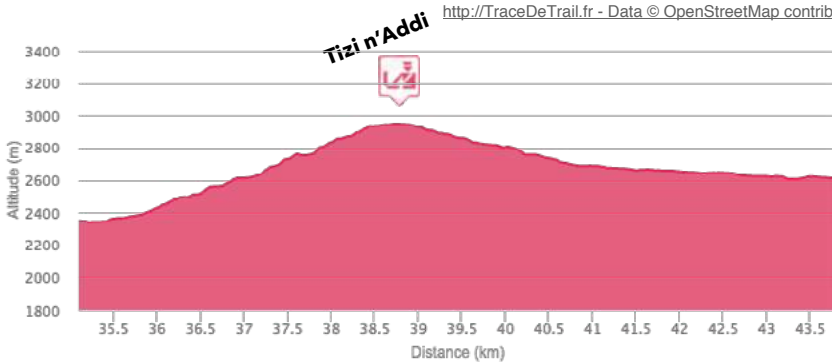
## Ultra Trail Atlas Toubkal 2018 - UTAT - Marathon de l'Atlas



Du km 35.1 au km 43.8, 649 m+, 385 m-



<http://TraceDeTrail.fr> - Data © OpenStreetMap contributors, ODbL



The route has then more than 600 m of positive elevation. The surprising ascent puts you in permanent contact with the solid rock of Jbel Anggour (3614 m). This ultimate climb offers small spaces where you can make brief stops, if you feel the need. Arrived at Tizi n'Addi (2 960 m), you can slide for 6 km to the bottom of a valley. A last effort and the ephemeral village of the UTAT will appear on the plateau. Do not sprint too much, savor each and every stride!